



The product images are for illustration purposes only. Actual product appearance, ports, keyboard layout, and accessories may vary by model.

- 27-inch FHD display with IPS panel
- 99% sRGB color space coverage & 1,500:1 contrast ratio
- 100Hz refresh rate, which can be manually adjust to 48Hz
- HDMI® and VGA ports for connectivity
- Low Blue Light Hardware and Flicker Free Technology
- Ergonomic tilt stand for adjustability (-5°/+22°)
- Case color - Raven Black
- 3-year limited warranty

Premium Care - Advanced Support from Real People. Real Fast.



REAL PERSON

Choose how you want to reach us - through the phone, chat or email - our expert technicians will take care of you.



REAL FAST

Highly trained technicians will provide you real-time solutions, whatever the issue, on your first contact. If needed, our team will schedule an onsite visit for the next business day.



HASSLE FREE

'Getting started' and 'how-to' assistance for hardware and software. Easy solutions that are simple to reach - that's how Premium Care delivers you the ideal support experience.



PC HEALTH CHECK

Free annual PC Health Check that allows our experts to spot issues before you do so they can resolve them quickly and help you avoid PC problems.

Accidental Damage Protection - Protection of your PC from the unexpected.

Experience shows that a significant portion of devices may be damaged (and not covered under warranty) in the first three years. Lenovo's Accidental Damage Protection service covers accidents beyond the system warranty such as drops, spills, bumps and even electrical surges. Make sure your new device has maximum protection, avoid unplanned costs and get peace of mind.

Base Warranty - Included with the systems you purchase, default 1- or 3-year coverage window.

Warranty Extensions & Upgrades - Service and protection that's right for your circumstances.

- Pick Up & Return Courier
- Onsite Support

- Technician Installed Customer
- Replaceable Unit Service
- International Warranty Upgrade

Recommended Accessories Mexico



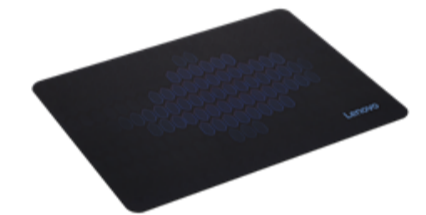
Lenovo Ultra High Speed HDMI™ Cable 1.8m

4X91U92141



NanoSaver Cable Lock from Lenovo

4XE1L51710



Lenovo Cloth Gaming Mouse Pad M

GXH1C97873

>> [View More Accessories](#)

Recommended Services

Best

4Y Premier Support upgrade from 3Y Courier/CCI Product Exchange ThinkVision (5WS1N78824)

Better

3Y Premier Support upgrade from 3Y Courier/CCI Product Exchange ThinkVision (5WS1N78823)

PERFORMANCE**Display Size**

27"

View Area

597.9x336.3 mm

Panel

In-Plane Switching

Backlight

WLED

Aspect Ratio

16:9

Resolution

1920x1080

Pixel Pitch

0.3114x0.3114 mm

Dot / Pixel Per Inch

82 dpi

View Angle (H / V)

178° / 178°

Response Time

4ms GtG (Extreme mode) / 6ms GtG (Typical mode)

Color Support

16.7 Million

Refresh Rate

100Hz

Brightness300 cd/m²**Contrast Ratio**

1500:1

Color Gamut

99% sRGB

Screen Surface Treatment

Anti-glare

Curvature

Flat Panel

Camera

None

Microphone

None

Speakers

None

Power Consumption (Typical / Maximum)

17.3W / 19.8W

Power Adapter

Integrated

DESIGN**Stand**

Tilt Stand

Case Color

Raven Black

Side Bezel Width

2.0 mm

Mounting

Supports VESA mount 100 x 100 mm

ThinkCentre M Series Support

Tiny Support

Dimensions (WxDxH)^[1]

- Unpacked with Stand | 611.9 x 210.0 x 443.5 mm (24.09 x 8.27 x 17.46 inches)
- Head Only | 611.9 x 44.4 x 366.5 mm (24.09 x 1.75 x 14.43 inches)

Packaging Dimensions (WxDxH)

690.0 x 111.0 x 525.0 mm (27.17 x 4.37 x 20.67 inches)

Weight^[2]

- Monitor With Stand | 4.1 kg (9.0 lbs)
- Monitor Head Only | 3.7 kg (8.2 lbs)

Packaging Weight

- EPS: 5.8 kg (12.8 lbs)
- Pulp: 6.4 kg (14.1 lbs)

CONNECTIVITY**USB Port**

None

Video Connector

1x HDMI® 1.4, 1x VGA

Network Connectivity

None

SERVICE**Base Warranty**

3-year limited warranty

CERTIFICATIONS**Environmental Certification**

ENERGY Star Certified, EPEAT™ Gold, EU Energy Efficiency Level (Level-D), RoHS, Volatile Organic Compound Certification

Ergonomic Certification

TÜV Low Blue Light (Hardware solution), TÜV Rheinland® Flicker Free

Sync Technology

None

SOFTWARE**Operating System**

Support Windows® 10, Windows® 11

ACCESSORIES**In the Box**

- Monitor with stand
- 1x HDMI® 1.4 cable (1.8m)
- 1x Power cable (1.8m)
- Quick setup guide

MODEL**Region** : LA**EAN / UPC / JAN:** 0198157472433 / 198157472433 / None**Announce Date** : 2025-07-02

Product image is a sample, it may not match the real color of this model

Note:

[1] The system dimensions may vary depending on configurations.

[2] The system weight is approximate and based on results in Lenovo lab, which varies depending on the source of component, variance of the distribution of each component, and manufacturing process. It may not be the exact weight for each specific model.

- Please refer to the official [Lenovo store website](#) or contact a local Lenovo sales representative or authorized business partner for current inventory and purchase options.
- Lenovo reserves the right to change specifications without notice.